

## DESIGN

### Display Size

27"

### View Area

596.7 x 335.7 mm (23.49 x 13.22 inches)

### Panel

In-Plane Switching (IPS)

### Aspect Ratio

16:9

### Resolution

2560x1440

### Pixel Pitch

0.2331 x 0.2331 mm

### Dot / Pixel Per Inch

109 dpi

### View Angle (H / V)

178 / 178

### Pixel Response Time

4 ms (Extreme mode) / 6 ms (Typical mode) / 14 ms (off mode)

### Contrast Ratio

1000:1

### Color Gamut

99% sRGB

### Brightness

350 nits

### Anti Reflective

Anti-glare

### Stand

Tilt, Swivel, Pivot, Height Adjust Stand

### Color

Black

### Side Bezel Width

2 mm

### Dimensions with Stand (HxWxD)

614 x 329 x 554.25 mm (24.17 x 12.95 x 21.82 inches)

### Weight (Including Stand)

7.95 kg (17.53 lbs)

### Touchscreen

Non-touch

### Buttons

- Exit button
- Menu button
- Volume button
- Mode-switching button
- Power button
- Brightness button

### Mounting

Supports VESA mount (100mm)

### Compatible Tiny

ThinkCentre® Tiny, ThinkCentre Nano, and ThinkStation Tiny

## PERFORMANCE

### Camera

RGBIR camera

### Speaker

Stereo speakers, 2W x2

### Microphone

Dual array microphone

### Power Adapter

170W 88% Adapter

### CPU / Platform

None / None

### Display Ram / Storage / Card Slot

None / None / None

## CONNECTIVITY

### Rear Ports

- 1x power connector
- 1x USB upstream port
- 1x HDMI®-in
- 1x DisplayPort™

### Left Ports

- 2x USB 3.1 Gen 1 (on TIO)
- Side ports offered by installed Tiny (on Tiny)
- 1x headphone / microphone combo jack (on TIO)

### USB Port

2 x USB3.1 Gen1 (only available when a Tiny is installed or a PC is connected)

### Multiple Input

DP, HDMI

### Wireless / Ethernet / Bluetooth™

None / None / None

### Monitor Cable

Undetachable 3-in-1 cable (Power connector, USB [supports USB 3.1 Gen1 / USB 2.0], DisplayPort)

### In the Box

- Reference and Driver CD
- Power Cord
- TIO 27 (Monitor)
- Power Adapter
- Detachable Stand

## SECURITY & PRIVACY

### Physical Locks

Kensington® Security Slot

## SERVICE

### Base Warranty

3-year

## CERTIFICATIONS

### ENERGY STAR®

Yes

### TCO

TCO8.0

### EPEAT™

Silver

### Low Blue Light / Eye Comfort / Eyesafe Display

Eye Comfort

### Green Certifications

- TCO edge 2.0
- WEEE
- VOC
- TUV
- RoHS compliant
- ENERGY STAR 8.0
- EPEAT Silver
- ULE Gold

### Other Certifications

- TÜV Eye comfort certified
- ISO 9241-307

## SOFTWARE

### Operating System Support

Support Windows® 7, Windows 10

## MODEL

Announce Date : 2020-03-20

EAN / UPC /  
JAN

: 0195042227826

## Premier Support - A direct 24x7x365 line to our most elite technicians.



Advanced technical support, 24x7x365, in more than 100 markets



Technical Account Managers for proactive relationship and escalation management



Comprehensive hardware & OEM software support



Priority on service delivery and repair parts



Single point of contact for simplified end-to-end case management



Lenovo Service Connect Portal for customized reporting and product support

## Accidental Damage Protection - Protection of your PC from the unexpected.

Experience shows that a significant portion of devices may be damaged (and not covered under warranty) in the first three years. Lenovo's Accidental Damage Protection service covers accidents beyond the system warranty such as drops, spills, bumps and even electrical surges. Make sure your new device has maximum protection, avoid unplanned costs and get peace of mind.

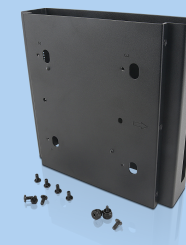
## Base Warranty - Included with the systems you purchase, default 1- or 3-year coverage window.

## Warranty Extensions & Upgrades - Service and protection that's right for your circumstances.

- Pick Up & Return Courier
- Onsite Support
- Technician Installed Customer
- Replaceable Unit Service
- International Warranty Upgrade

Lenovo may not offer the products, services or features discussed in this document in all regions. Lenovo may withdraw an offering at any time. Information is subject to change without notice. Consult your local representative for information on offerings available in your area. Lenovo reserves the right to change specifications or other product information without notice. Lenovo is not responsible for photographic or typographical errors. Lenovo provides this publication "as is" without warranty of any kind, either express or implied, including the implied warranties of merchantability or fitness for a particular purpose.

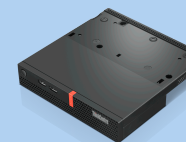
## Recommended Accessories



### ThinkCentre Tiny Sandwich Kit II

4XH0N04098

The ThinkCentre Tiny Sandwich Kit II is a mechanical bracket which can mount your ThinkCentre Tiny PC between monitor and ThinkCentre Extend Arm. The Tiny Sandwich kit enables more desktop and floor space while provid...



### ThinkCentre Nano TIO Cube

4XF0V81632

The ThinkCentre Nano TIO Cube allows you to configure your own AIO PC using a Nano PC as the computing power. Simply connect your Nano PC to your TIO Cube and then slide them into a TIO monitor. This solution works wi...

For a full list of accessories and services, please visit:  
<https://smartfind.Lenovo.com>

**Lenovo**

**PSREF**  
Product Specifications  
Reference